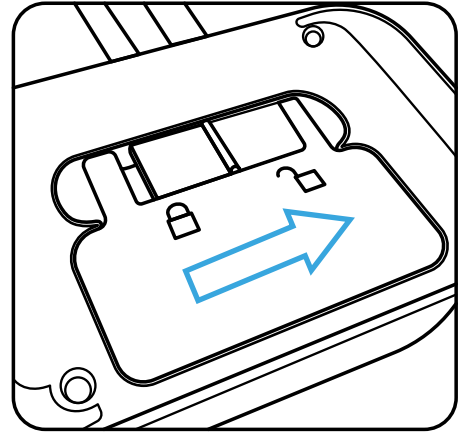


# How to replace the battery in Beam 4.0

## STEP 1.

### Unlock the battery lid

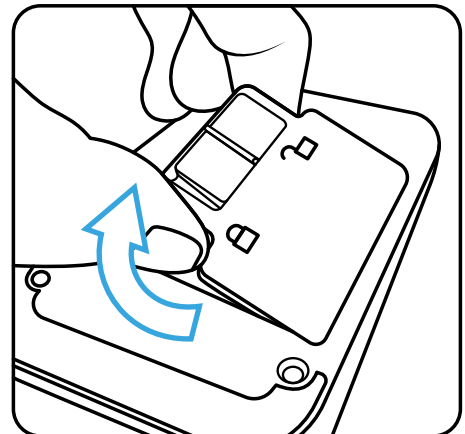
- Slide the small locking mechanism to the unlocked position.



## STEP 2.

### Gently pull open the lid

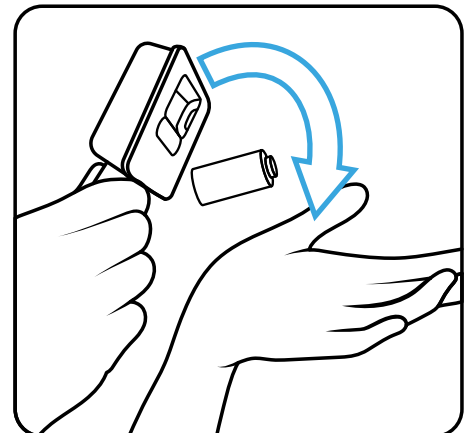
- To ensure full IP66 waterproofing, the lid is very tight due to the silicone seal.
- If necessary use a blunt prying tool to tip open the lid.



## STEP 3.

### Remove the battery by gently knocking the beam into your hand

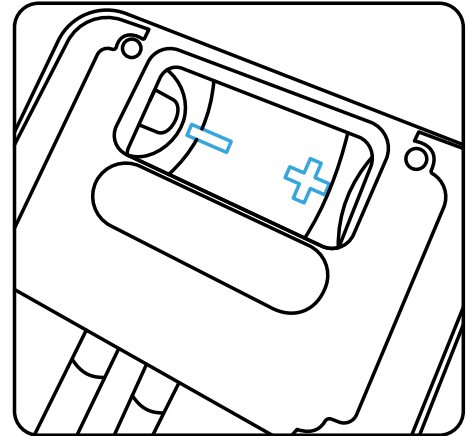
- Recycle the old battery properly either by returning it to Flowplan® or following your local recycling procedure.



## STEP 4.

### Insert the new battery

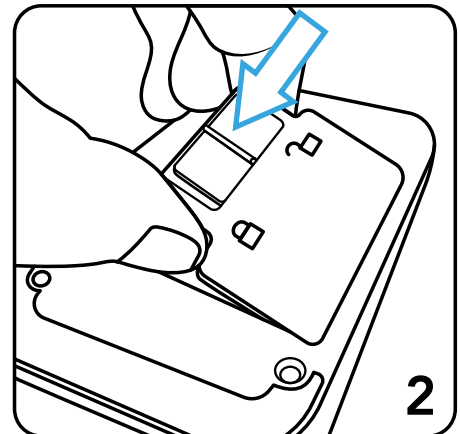
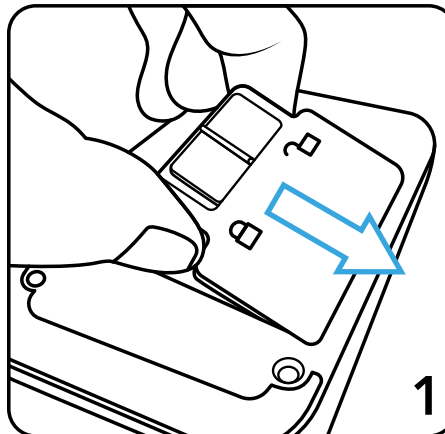
- Ensure the right polarity by matching **+** and **-** icons on the Beam and the battery.
- Only use batteries supplied by Flowplan, as other batteries may not work properly.



## STEP 5.

### Put the lid back on

1. Slide the top end in.
2. Press the lid down.



## STEP 6.

### Slide the locking mechanism back to the locked position

- Remember to change battery in the Flowplan® Backoffice or Flowplan® Fieldoffice app.

