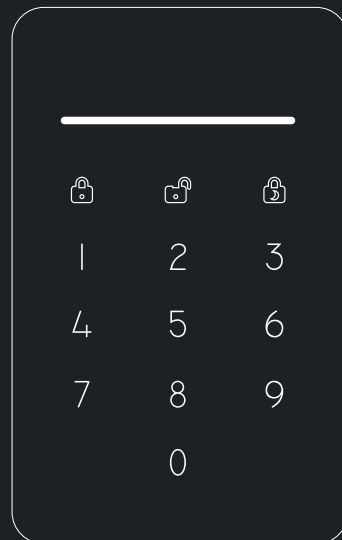


Please read this manual carefully before use.
Please keep it properly for further reference.

Safetifj[®]



The User Manual of **Wireless RFID Keypad**

CE    **2**
GRADE
EN50131
Made in China

SWRKPI V1

Technical Specifications



Specifications	
Working Humidity	≤90%
Working Temperature	-10°C~50°C
Input	DC 5V $\overline{\text{---}}$ 1.5A
Battery	Lithium-ion Battery, 800mAH
Wireless Frequency	433.92MHz / 868.35MHz
Transmission Distance	Up to 1000m without obstacle
Standby Time	6 months for daily use(8 times per day, 30 seconds each time)
Weight	180g with backup battery
Size	144.5x91.8x20.8mm (LxWxH)(±0.1mm)
Status Bar	1 bar, 3 color (RED/GREEN/BLUE), upon the button area.
Power Switch	X1, beneath battery cover.
Reset Button	X1, pin hole, beneath battery cover.
Buttons	13 Touch buttons
RFID Area	All front area around the buttons.
Materials	FRONT : PC, BACK : Non glassy surface to avoid scratches, WALL BRACKET : Non-glassy surface to avoid scratches
Wall Mounting	Using Mounting Bracket
Features	
Power Saving	Supported, not supported while charging, the realtime status would be updated only when keypad is activated.
Pairing	Supports scanning QR Code for pairing.
Low Battery Warning	Supported. Color indicated on keypad and warning in APP.
Tamper Alarm	Supported
RFID Disarm	Supported, up to 99 RFID tags.
Reset	Supported

FAQ

Problem	Cause	Solution
No response from keypad	Low Battery	Please connect the power adapter to charge the battery.If the problem is not solved, please contact the distributor for more help.
	Wearing Gloves	Take off the glove and try pressing the keypad again.
Keypad can't be paired with the system	No response from the alarm system.	Make sure the alarm system is power ON and the App has already connected to the system. Always make sure the location of the keypad installed can be covered by the RF signal sent from the alarm system. You can use a paired remote controller to test.
Can't disarm by the RFID tag.	The RFID tag hasn't paired with the alarm system.	Using the App to pair the RFID tag with the system.
	Keypad is in power saving mode.	Touch any button of the keypad to activate it.
[Arm] [Disarm] [Home Arm] failure	Wrong operation password	Please input the right code. Users can modify the operation code in App, advanced setting-Reset PIN

Table of Contents



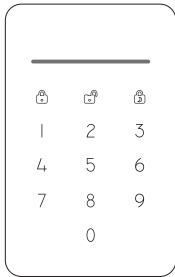
Introduction	02
Foreword	02
Parts List	02
Appearance	03
Preparation before Use	04
Pair the Keypad with the Main Panel	05
Pair the RFID Tag with the Main Panel	05
Usage	06
Activate Panel	06
Arm/Disarm/Home Arm	06
Care & Maintenance	07
Usage Notices	07
Maintenance	07
FCC Statement	07
FAQ	08
FAQ	08
Technical Specifications	09
Technical Specifications	09

Introduction

Foreword

Thank you for purchasing this wireless keypad. It is recommended to install close to the entry door inside, so users can conveniently operate arm, disarm, home arm after inputting passcode on keypad or arm/disarm by the RFID tags. This keypad is recommended to use the Entry Delay feature of the smart alarm system, to avoid triggering alarm before disarming from keypad after entering the house. The operations are quite easy, just input the passcode then press [Arm]/[Disarm]/[Home Arm] key, or put RFID tag on the keypad to arm/disarm the system.

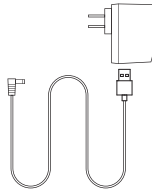
Parts List



Keypad X1



Wall Mount Bracket X1



AC/DC Power Adapter X1

Care & Maintenance



Usage Notices

- The keypad should be paired to control panel before use.
- The power supply of keypad could impact on the transmitting distance of wireless signal.
- The keypad is compatible for most of our alarm system, contact the distributor for more detail.
- Please make sure the battery has been installed in the keypad before use.
- The keypad is neither waterproof nor moisture-proof, please install it in a shady, cool and dry place.
- Install the keypad away from equipments that produces heat or electric-magnetic, such as heater, air conditioner, microwave oven etc.
- Take the keypad for disposal of recycling according to the local regulation.
- Do not take apart the product if you are not a professional technician.

Maintenance

- You can get dust or fingerprint off with a dry, soft cloth or tissue
- If there is dirt on the keypad, please wipe the surface by a soft cloth with a little dilute alkaline detergent and then wipe again with a dry cloth.

FCC Statement

This equipment has been tested and found to comply with the limits for a Class B digital device, pursuant to Part 15 of the FCC Rules. These limits are designed to provide reasonable protection against harmful interference in a residential installation. This equipment generates uses and can radiate radio frequency energy and, if not installed and used in accordance with the instructions, may cause harmful interference to radio communications. However, there is no guarantee that interference will not occur in a particular installation. If this equipment does cause harmful interference to radio or television reception, which can be determined by turning the equipment off and on, the user is encouraged to try to correct the interference by one or more of the following measures:

- Reorient or relocate the receiving antenna.
 - Increase the separation between the equipment and receiver.
 - Connect the equipment into an outlet on a circuit different from that to which the receiver is connected.
 - Consult the dealer or an experienced radio/TV technician for help.
- This device complies with part 15 of the FCC Rules.

Operation is subject to the following two conditions:

- ① This device may not cause harmful interference.
- ② This device must accept any interference received, including interference that may cause undesired operation.

Changes or modifications not expressly approved by the party responsible for compliance could void the user's authority to operate the equipment.

Usage

Activate Panel

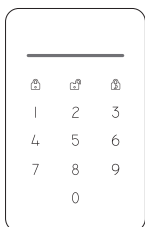
1. When the keypad is in sleep mode, touching any button of the keypad will activate the keypad.
2. After being activated, the keypad will synchronize the real-time status with the alarm system immediately, the result will be represented by the status bar.
3. When there is no operation on the keypad, it will enter sleep mode within 10 seconds.
4. When the keypad is sleeping, it will not react to any signal sent from the system until the next activation.

Why sleep?

Sleeping is the solution for long-time use when the keypad is in battery mode.

When the power adapter is connected, it starts providing power and charging the battery.

With the help of over-charging protective circuit, we recommend users to keep the adapter connected while using. If you don't connect adapter, the Low battery indicator will light up once in 15 seconds and push notification will be sent to the APP. Please charge in time.



Arm/Disarm/Home Arm

Input the operation code, and press **[Arm]** **[Disarm]** or **[Home Arm]** key.

The status bar will flash once and then change the color as following pattern after command is executed correctly.

[Arm] : Red

[Disarm] : Green

[Home Arm] : Blue

Note: The operation code can be set in the App.

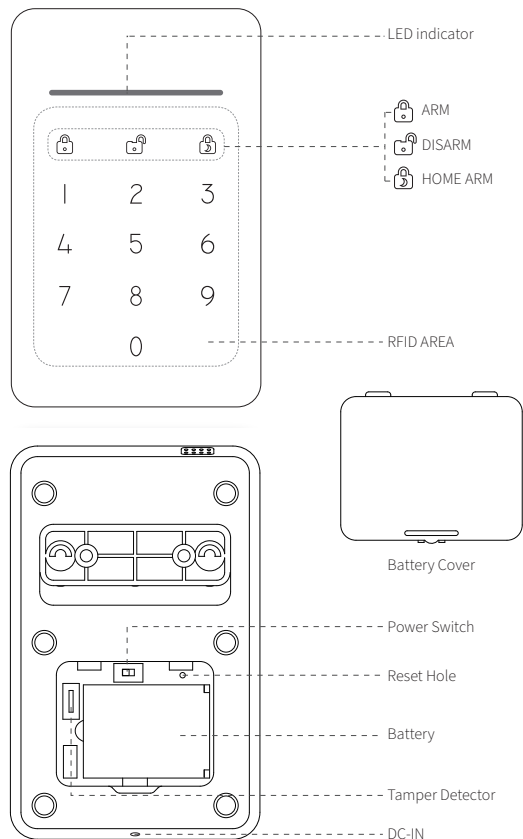


Read the RFID tag on the keypad panel, the system will Disarm immediately if the tag is paired before.



Once the system is in SOS status and the keypad is activated, the status bar will be red-flashing and generate beep alarm sounds for 1 minute.

Appearance



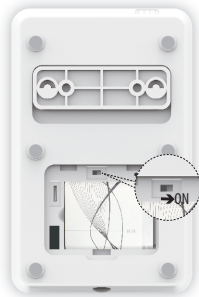
Preparation before Use



1. Make sure the battery has been installed correctly.



2. If you are using it for the first time, please connect the keypad to the power adapter. The LED indicator will flash while charging until it stays on, which means it is fully charged.



3. Remove the battery cover and turn on the power switch.

Pair the Keypad with the Main Panel



Scan QR Code

1. Reset the keypad until the status bar is flashing in 3 colors.
2. Launch the App, In the accessory management section, tap [Add Accessory].
3. Scan the QR Code on the keypad.
4. Follow the guideline in App and save the settings.

The keypad will beep once when the pairing process is finished.

Pair the RFID Tag with the Main Panel

Scan QR Code

1. Make sure the keypad has been paired with the system.
2. Launch the App, In the accessory management section, tap [Add Accessory].
3. Scan the QR Code on the RFID Tag.
4. Follow the guideline in App and save the settings.

You can try disarming the system by reading the RFID tag via keypad after pairing, to check if the tag has been correctly paired.